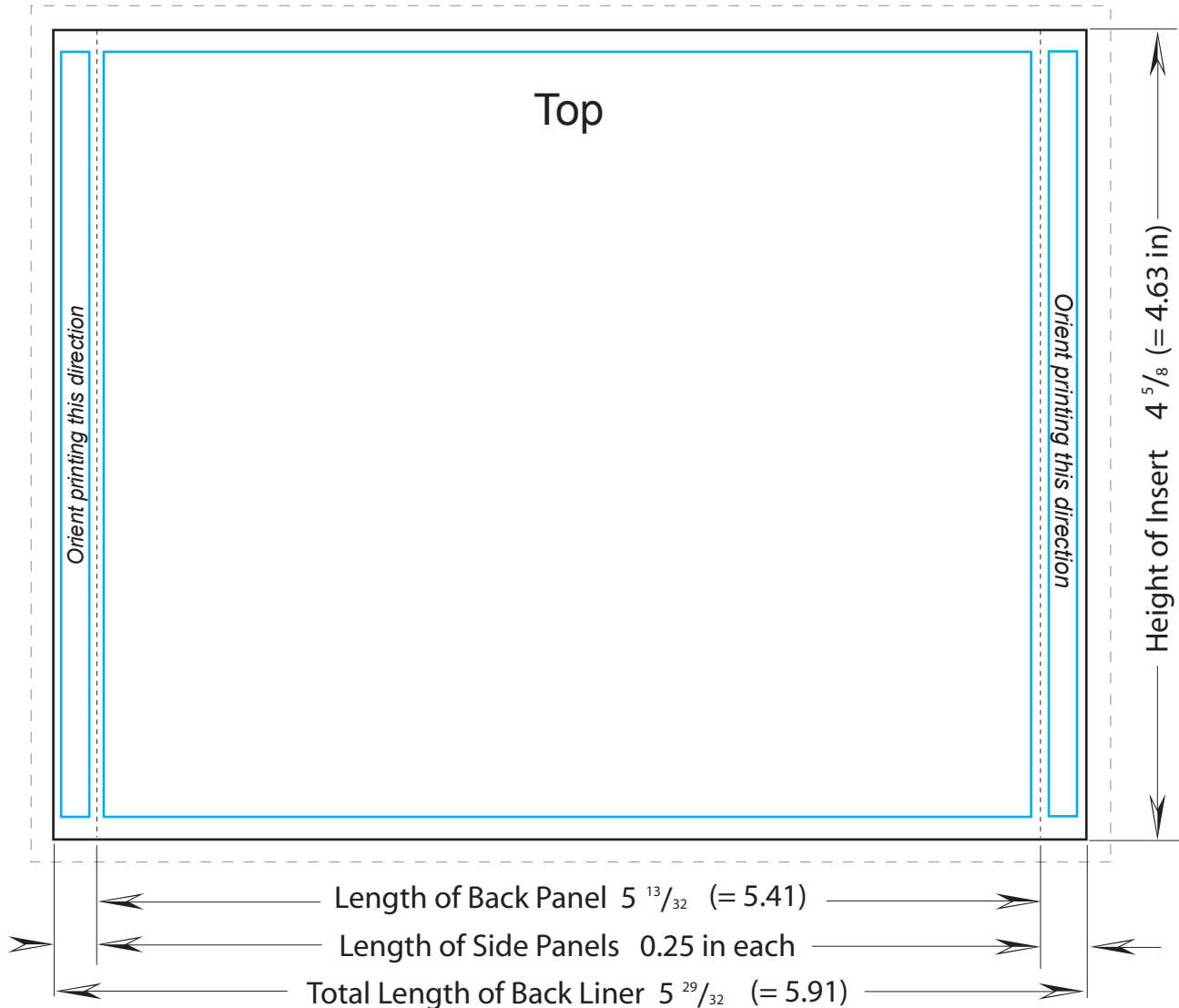




# CD Jewel Case Tray Liner Template



Note 1: For artwork with bleeds\*: Bleeds must extend 1/8" outside cut line.

Note 2: Keep text and other important graphical elements within shaded area (1/8" from top & bottom, 1/16" from sides & perforations) due to cutting tolerances.

## KEY

- Die (cut) Lines
- - - Bleed (*note 1*)
- Keep text within here (*note 2*)
- Perforation

Do not include outlines or other drawing objects from our template unless you specifically want them to print on your insert. The quality of your artwork file will affect the look of the tray liners, so avoid low resolution images which may appear pixilated.